



# 2020-21 CAFETERIA GUIDELINES

## Nutri-Serve's 2020-21 School Year Mission:

To safely & efficiently feed our customers healthy meals with an even greater emphasis on food safety & sanitation during this pandemic. Our commitment to safety practices:

1. Personal Protective Equipment (PPE) for food service staff
2. Frequent surface sanitizing
3. Frequent glove changing
4. Temperatures taken of food service staff upon arrival
5. All foods wrapped or boxed
6. COVID Signage for staff & students.

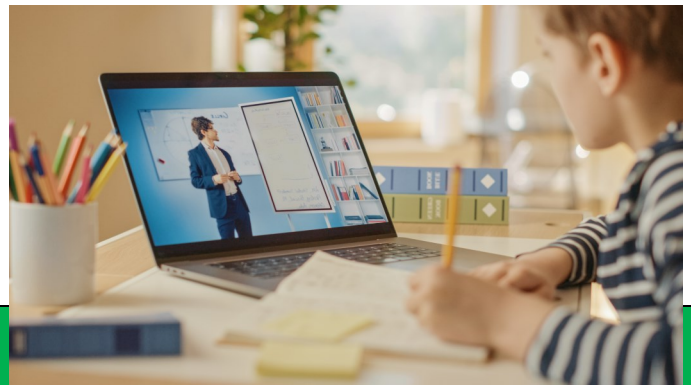
*Nutri-Serve Food Management, in partnership with School District Administrators, has designed several meal distribution models that are being tailored for each of our districts to start off the 2020-21 school year.*

**Northfield Community School** has chosen to implement our **ALL REMOTE MEALS MODEL**, as students will be eating all meals at home. Here is a snapshot of what this model will look like for your student...

### MEAL PRICES FOR 2020-21 SCHOOL YEAR:

PRICES— Free

- ♦ MEALS MUST BE ORDERED EACH WEEK!
- ♦ MEALS MUST BE ORDERED BY THURSDAY BY 6:00PM FOR THE FOLLOWING WEEK!



### ALL REMOTE MEALS MODEL DETAILS—

A parent or guardian picks up meals weekly

<b>What's included?</b>	All meals will be comprised of the components needed to make it a full meal according to DOA regulations. Each student may order breakfast, lunch or both meals for each day. Up to 5 days. Days will run Thursday– Wednesday.
<b>Pickup Location</b>	Meals can be picked up at <b>Northfield Community School</b> . Please come to door 10 for pick-up. Located on New Road side by the field.
<b>Pickup Time</b>	Meals will be available for pick up from <b>8 am-11 am &amp; 3pm-6pm every Wednesday</b> .
<b>How to Order</b>	Please order ALL meals through <a href="https://forms.gle/a2qU2hn3dLHap9Ps6">https://forms.gle/a2qU2hn3dLHap9Ps6</a> Orders must be placed by <b>6:00 p.m. on Thursday</b> for <b>Wednesday</b> pick up.
<b>Preparing &amp; Portioning Items</b>	Please follow our HEAT @ HOME preparation, storage and portioning instructions for putting together these meals for your student. <a href="#">CLICK HERE</a> to access this document or scan the QR code.
<b>Other Details</b>	<b>Meals will not be provided on school closure days . For ordering purposes from vendors meals must be ordered no later than 6:00 p.m. on Thursday.</b>



We appreciate your patience as we are all working with new systems to accomplish the mission of feeding your student in a **KIND, HEALTHY & SAFE** manner.

**Any Questions? Please contact:**

**Karen Watson** Food Service Director Nutri-Serve Food Management

[NFI@nsfm.com](mailto:NFI@nsfm.com) ~ 609-407-4000 ext 5522